

NİHÂVEND ŞARKI

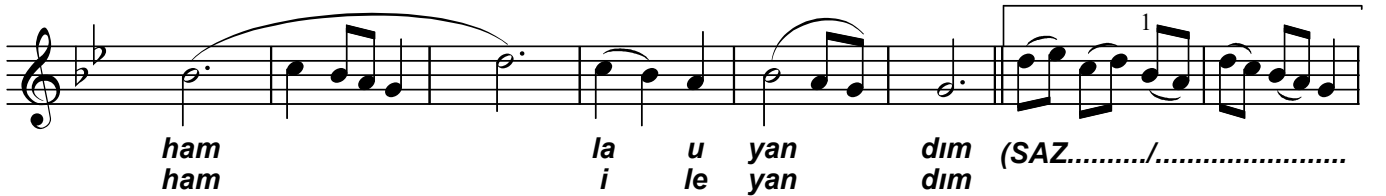
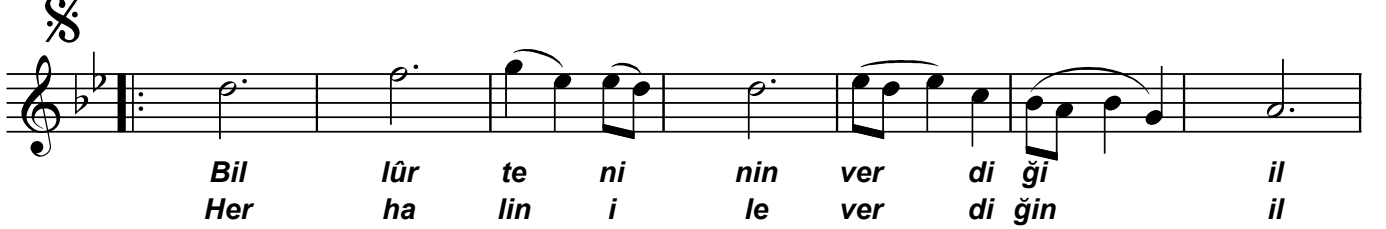
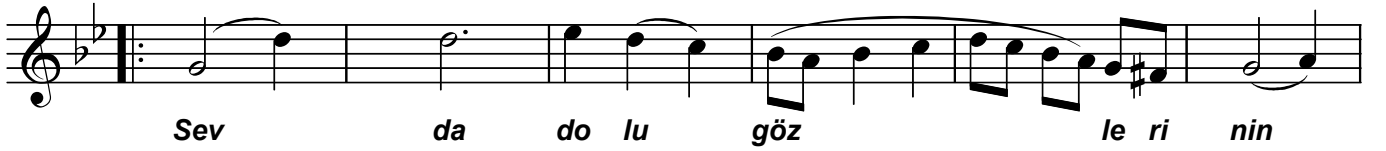
Usûl: Semâi

"Sevdâ dolu gözlerinin ben sihrine kandım"

Güfte ve Beste:
Dr. Alâeddin YAVAŞCA

(Beste tar.:10.01.1953 -
Sultanahmet)

♩ = 120



"Sevdâ dolu gözlerinin ben sihriine kandım"

The image shows a musical score for a song. It consists of five staves of music in a single system, each with a treble clef and a key signature of one flat (B-flat). The lyrics are written below the notes. The first staff contains the lyrics "Ey şuh o gece zevk le se". The second staff contains "ni sey re da lar ken". The third staff contains "(SAZ.../.....) Baş ba şa kal mak". The fourth staff contains "üm mid i le aş ka". The fifth staff contains "ka nar ken (SAZ.../.....)". There is a double bar line and a fermata symbol at the end of the fifth staff. The text "Dr.Semra Özgün Ekim - 2004" is written to the right of the fifth staff.

Ey şuh o gece zevk le se

ni sey re da lar ken

(SAZ.../.....) Baş ba şa kal mak

üm mid i le aş ka

ka nar ken (SAZ.../.....)

Dr.Semra Özgün
Ekim - 2004

**Sevda dolu gözlerinin ben sihriine kandım
Billûr teninin verdiği ilhamla uyandım
Ey şuh o gece zevkle seni seyre dalarken
Başbaşa kalmak ümmid ile aşka kanarken
Her hâlin ile verdiğin ilhâm ile yandım .**